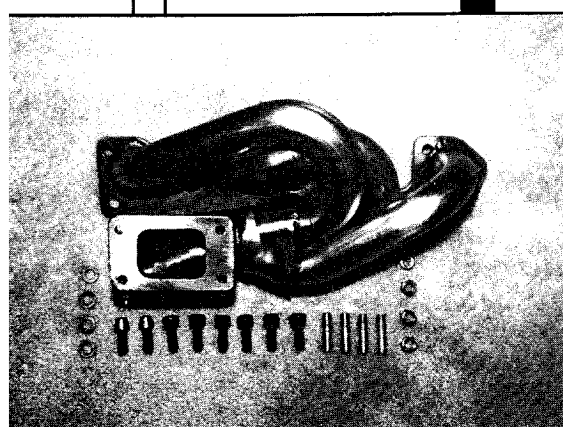
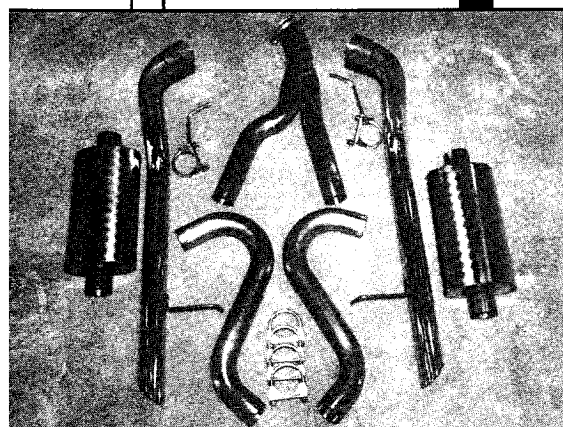
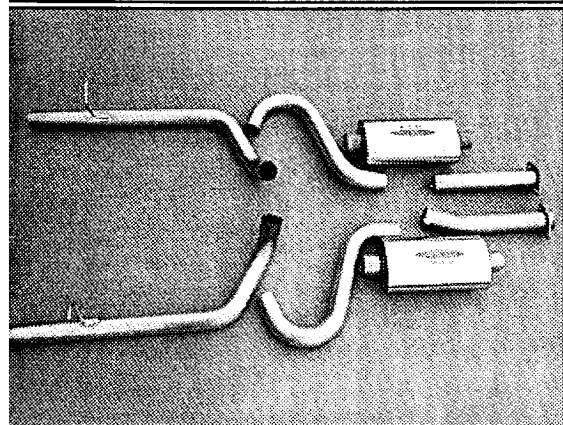


MUSTANG LX GT & SVO



◆ 87-93 MUSTANG DUAL 2½" + 94 COBRA STAINLESS EXHAUST

Features: *Nothing flows better!*

- ◇ Mandrel bent...smooth bends **full diameter**
- ◇ **Big 2½" T304 stainless tubing..the best**
- ◇ **LX piping show polished**
- ◇ Mufflers flow within **99.99% of a straight pipe**
- ◇ **Direct bolt-on** replacement cat-back

MU116A	87-93 GT exhaust, ss muffs	\$595.00
MU116B	87-93 GT exhaust, alum muffs	\$495.00
MU116C	87-93 LX exhaust, ss muffs	\$595.00
MU116D	87-93 LX exhaust, alum muffs	\$495.00
MU116E	94 cobra exhaust, ss muffs	\$595.00
MU116F	94 cobra exhaust, alum muffs	\$495.00
Shipping wt. 58 lbs		

◆ SVO DUAL 2 1/2" STAINLESS EXHAUST

Features: *Nothing flows better!*

- ◇ Mandrel bent...smooth bends **full diameter**
- ◇ **Big 2½" T304 stainless tubing..the best**
- ◇ **LX piping show polished**
- ◇ Mufflers flow within **99.99% of a straight pipe**
- ◇ **Direct bolt-on** replacement cat-back

SVO116A	SS exhaust, ss muffs	\$595.00
SVO116B	SS exhaust, alum muffs	\$495.00
Shipping wt. 60 lbs <i>fits 85-86 only</i>		

◆ SVO STAINLESS STEEL HEADER KIT

Check the stock exhaust manifold...it's made of iron and is a blunt log design...the flow is horrible! Inpect our new fabulous design...hundreds of hours in development. Now you can get a simple bolt on kit which permits you to run the stock intercooler or our ultra-intercooler. **Pick up a solid 22 hp** peak and get in front of the pack. Made from T304 aircraft **stainless** with cnc machined 1018 steel flanges that are dead flat! **This product has a zero failure history!**

SVO333	Stainless header kit	\$595.00
SVO555	O'ringed header gasket	19.95
Shipping wt. 12 lbs		

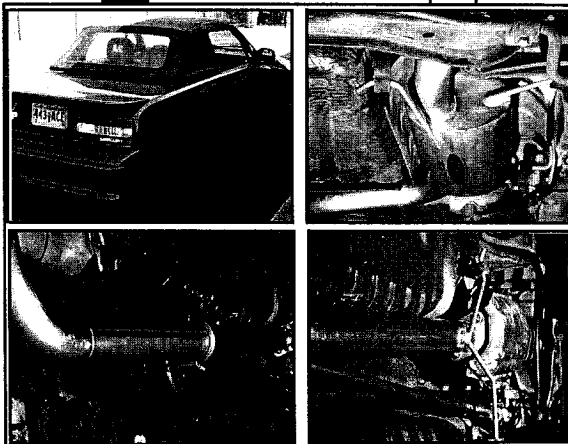
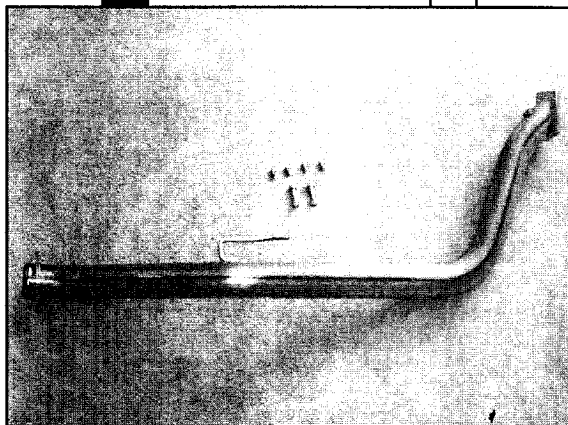
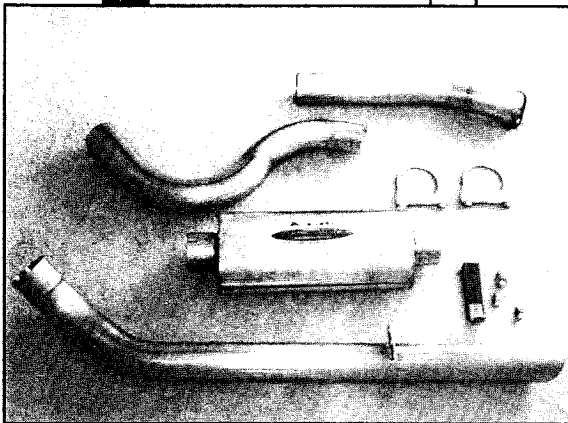
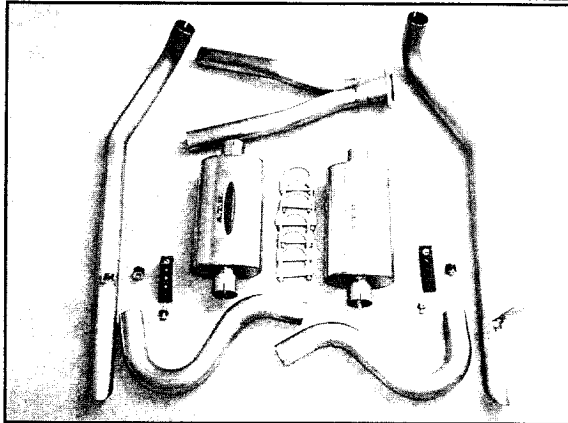
◆ SVO 3" STAINLESS DOWNPIPE

Eliminate the **ultra restrictive 90°** cast housing on your Garrett turbo and enjoy the major performance improvements of our **stainless steel** mandrel formed 3" downpipe which connects from the turbo to our 3" cat or 3" race pipe...**nothing flows better!** Designed to be used with our SVO100D-14 wastegate.

SVO301	Downpipe, 3" stainless	\$295.00
SVO100D-14	Wastegate, billet	\$295.00
Shipping wt. 12 lbs		

Downpipe is for offroad racing only...vehicles not used on public highways

Turbo Coupe & XR2 Capri



◆ 1987-88 DUAL 2½" SS TURBO COUPE STAINLESS EXHAUST

Features: *Nothing flows better!*

- ◇ Mandrel bent...smooth bends **full diameter**
- ◇ **Big 2½" T304 stainless tubing..the best**
- ◇ Mufflers flow within **99.99% of a straight pipe**
- ◇ **Quiet** but authoritative sound
- ◇ **2 stainless mufflers + stainless** steel clamps
- ◇ **Direct bolt-on** replacement
- ◇ Tips exit in the **stock location**

TC116D Dual muffler SS exhaust \$595.00

Stainless mufflers & stainless clamps

TC116B Dual muffler SS exhaust \$495.00

aluminized muffers and mild steel clamps

Shipping wt. 59 lbs

◆ 1987-88 3" SS TURBO COUPE STAINLESS EXHAUST

Features: *Nothing flows better!*

- ◇ Mandrel bent...smooth bends **full diameter**
- ◇ **Big 3" T304 stainless tubing..the best**
- ◇ Mufflers flow within **99.99% of a straight pipe**
- ◇ **Quiet** but authoritative sound
- ◇ **1 stainless 3" muffler + stainless** steel clamps
- ◇ **Direct bolt-on** replacement
- ◇ Tips exit on **driver side**

TC114 Crossflow SS exhaust \$395.00

Stainless muffler & stainless clamps

Shipping wt. 45 lbs

◆ TURBO COUPE 3" STAINLESS DOWNPIPE

Upgrade your Garrett turbo and enjoy the major performance improvements of our *stainless steel* mandrel formed 3" downpipe which connects from the turbo to our 3" cat or 3" race pipe...*nothing flows better!*

Eliminates the cat. If a cat is required purchase the 3" cat/race pipe kit so you have both configurations!

TC301 Downpipe, 3" stainless \$295.00

TC589 3" stainless cat/race pipe \$195.00

Shipping wt. 12 lbs

Downpipe & race pipe is for offroad racing only...vehicles not used on public highways

◆ MERCURY XR2 2½" STAINLESS EXHAUST

Features: *Nothing flows better!*

- ◇ Mandrel bent...smooth bends **full diameter**
- ◇ **Big 2½" T304 stainless tubing..the best**
- ◇ Mufflers flow within **99.99% of a straight pipe**
- ◇ **Soft** authoritative sound
- ◇ **Stainless muffler + stainless** steel clamps
- ◇ **Direct bolt-on** replacement
- ◇ Tip exits in the **stock location**

XR2-114 2½" stainless exhaust \$495.00

Stainless muffler & stainless clamps

Shipping wt. 38 lbs